

AQUABLOCK™ 2

HIGH VOLTAGE BLOCKING SYSTEM



DESCRIPTION

ITW presents a simple, effective way to handle waterborne coatings electrostatically. The AquaBlock 2 provides a “voltage block” for the electrostatic isolation of high voltage paint applicators from grounded, waterborne coating supplies.

By combining the advantages of waterborne coating technology with the efficiency of electrostatics, AquaBlock 2 can favorably reduce your company’s environmental impact. With high transfer efficiency and low waste, the AquaBlock 2 is not only an environmentally friendly solution but also reduces operating expenses.

The user-friendly and versatile design of the AquaBlock 2 can fit into any paint feed system and attaches to single or multiple applicators to provide an optimal application every time. Pneumatic controls simplify the operation providing higher productivity and less need for troubleshooting. Quick color changes also minimize interruptions and delays to deliver a consistent finish in an efficient manner.

FEATURES AND BENEFITS

- **Reduced Environmental Impact...**helps you comply with increasing requirements of environmental legislation
- **4-way Shuttle Assembly...**provides a smooth, continuous flow of paint to spray applicators for an even finish
- **Reduced Operating Costs...**less paint and water during flush cycle lowers waste and disposal expenses
- **Adaptable Fluid Handling...**does not require compatibility of the paint
- **Fast, Easy Color Change...**achieves color change in as little as 60 seconds
- **Pneumatic Controls...**unit can be located inside or outside hazardous areas without increasing safety concerns
- **Minimal Maintenance/Easy Repair...**easily field repairable with only a few standard tools
- **Small, Modular Design...**able to be easily incorporated into paint systems
- **Single or Multiple Automatic Applicators...**versatile model provides flexibility for optimal application
- **Smooth Internal Fluid Passages...**for easier cleaning with less cross-contamination of paint colors
- **Solvent Proof Components...**longer lasting and higher durability



AQUABLOCK™ 2

HIGH VOLTAGE BLOCKING SYSTEM

SPECIFICATIONS

PHYSICAL

Dimensions: 30" Wide x 36" High x 13" Deep
(76.2 cm Wide x 91.4 cm High x 33.0 cm Deep)

Weight: 110 lbs (approximately) (50 kg)

ELECTRICAL

High Voltage: 100 kV maximum

MECHANICAL

AIR

Air Supply: 90 psi +/- 5 psi
(6.2 bar +/- 0.3 bar)
10 scfm maximum (Air required for cylinder sensing circuit) (283 slpm)

Air Filtration: 25-50 micron

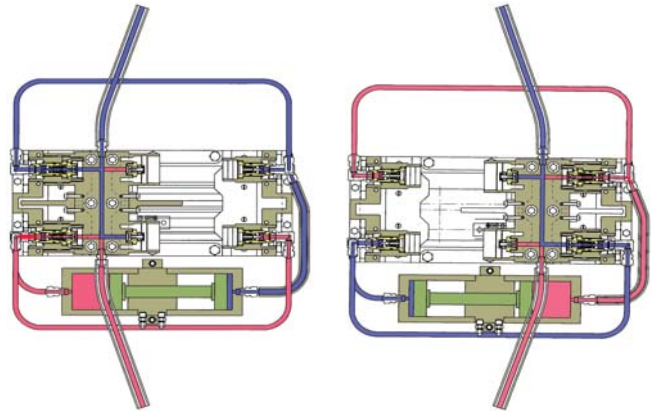
PAINT SUPPLY

Pressure: 100 psi maximum
(6.9 bar)
20 psi minimum
(1.4 bar)

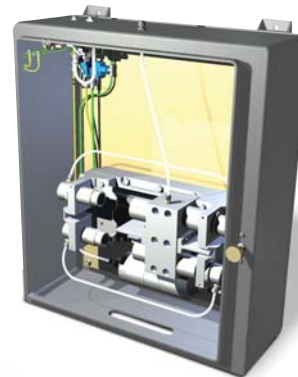
Volume: See maximum pressure
(Depending on viscosity)

Temperature: 120° F maximum
(49° C)

-Filtration is required for paint, water, and / or solvent supplies connected to the system



Shuttle mechanism with QD couplings replaces the the IsoPurge valve, blocking media and monitor system in previous style AquaBlock.



Simplistic design for ease of maintenance

ITW Ransburg

ITW Ransburg
An Illinois Tool Works Company
320 Phillips Ave., Toledo, Ohio 43612-1493 USA
Tel: +1-419-470-2000 Fax: +1-419-470-2270
General email: marketing@itwransburg.com
web: www.itwransburg.com

